



**SPARTAN
MAT**

(888) 959-6287
Sales@SpartanMat.com



Transport Quantities:

Standard semi trucks can load 45 mats per truck!

Weight per mat:

1,040 lbs per mat

Size/Dimensions:

4.25" x5x' 14'

Usable size after overlapping and interlocking:

7'x13'

Transport Quantities: Yes

Static Dissipative: Yes

Thermal Expansion:
Impact modifiers added

**NEW AND IMPROVED
LOCKING PINS!**

- ◆ Easy to connect.
- ◆ Interchangeable.
- ◆ Fast to install.
- ◆ Built Spartan Tough.



EXPECT THE BEST FROM SYSTEM7™

- ✓ Strongest Mat in the world!
- ✓ Strongest connecting lip in the world!
- ✓ Patented ZeroSkid™ technology gives System™ the best coefficient of friction (traction) in the world!
- ✓ Patented locking pins solve problems other pinning systems still deal with.
- ✓ System™ unique formulation minimizes or eliminates the curling problems associated with other composite mat products.



Spartan Mat, llc
With over 89 locations, we're closer than you think!
(888) 959-6287 | Sales@SpartanMat.com



**SPARTAN
MAT**

(888) 959-6287
Sales@SpartanMat.com

Proactively, we find solutions that best achieve our clients' goals. We believe lasting relationships are the lifeblood of our business.

MATTING PROVIDES PROTECTION FOR:

- The Environment
- Equipment
- Your Workforce
- Infrastructure
- Containment Layers

MATTING CREATES:

- Usable Work Surfaces
- Increased Efficiencies
- Less Down Time
- Stability for Lifts
- Temporary Roads
- Temporary Bridges

MATTING HELPS PREVENT:

- Work Delays
- Damage to Equipment
- Injury to Personnel
- Remediation Needs

FEATURES

- ✓ System7™ is designed to be easily connected to one of the most common mats in the industry and to any other mat systems with simple cross over sections.
- ✓ Comes standard with UV protection and anti-static additive package.
- ✓ Quick & Simple Installation with Minimal Training.
- ✓ Inexpensive Hardware Connectors.
- ✓ Can be 100% Recycled with Refunded Value.
- ✓ Will Not Absorb Contaminants.
- ✓ Long Lasting: 10-15 Year Life Cycle.
- ✓ The internal design of System7™ is compartmentalized, so if you ever do puncture/gouge your mat and water gets inside the mat (which happens to all mats), the water will only be able to penetrate that specific area, and not throughout the rest of the entire mat.
- ✓ From the internal ribbing and core of System7™, the compression strength design values are better than any of our competitors.
- ✓ System7™ gives you the option to choose your own color and/or add your company name and logo.

Spartan Mat, llc

With over 89 locations, we're closer than you think!

(888) 959-6287 | Sales@SpartanMat.com



**SPARTAN
MAT**

(888) 959-6287
Sales@SpartanMat.com

Spartan Composites believes in taking care of customers. We operate with one fundamental business concept; our clients are the beginning and the end of our reason to be in business.

APPLICATIONS

- ◆ Oil & Gas, & Water Well Drilling
- ◆ Temporary Access Roads
- ◆ Utilities & Pipeline Construction
- ◆ Work Platforms
- ◆ Ground Protection Construction Sites
- ◆ Staging Areas
- ◆ ROW Mats
- ◆ Floating Platforms
- ◆ Environmental Containment
- ◆ Helicopter & Aviation Landings
- ◆ Heavy-Haul Applications



SPOTLIGHT YOUR COMPANY!

Spartan Composites can mold your company name / info / logo into each mat's lip/edge.

SERIAL NUMBERS:

Each and every mat that comes off our production line has its own unique serial number, making tracking your assets easier!

SUPPORT!

For your initial installation of qualifying jobs, Spartan Composites sends specialized field technicians to your site at no cost to you. We can continue to do so as additional needs or support is required.



Spartan Mat, llc

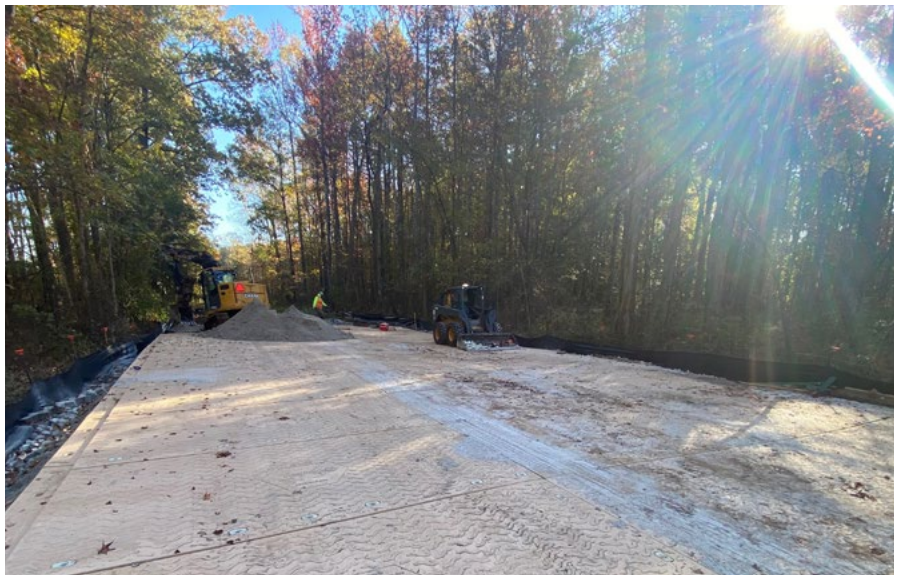
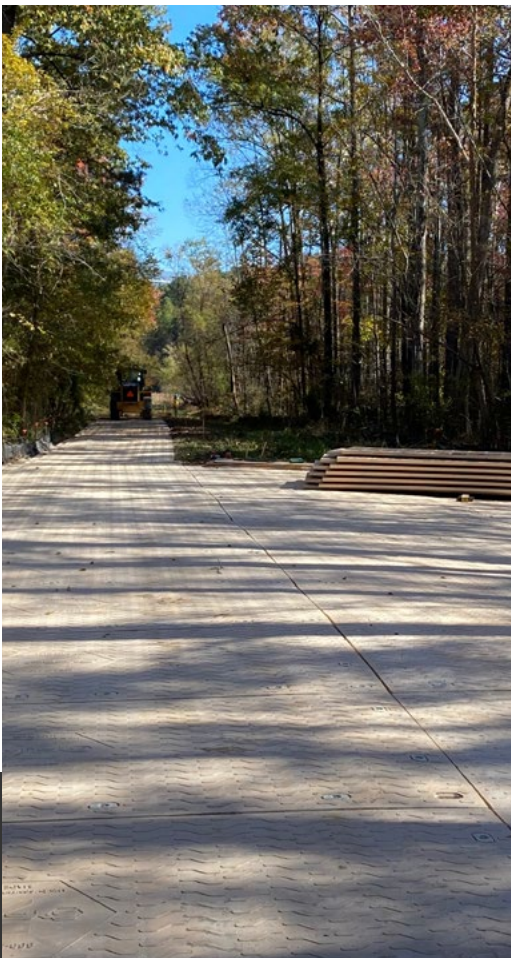
With over 89 locations, we're closer than you think!

(888) 959-6287 | Sales@SpartanMat.com



SPARTAN MAT

[888] 959-6287
Sales@SpartanMat.com



Spartan Mat, llc
With over 89 locations, we're closer than you think!
[888] 959-6287 | Sales@SpartanMat.com