



**SPARTAN
MAT**

(888) 959-6287
Sales@SpartanMat.com

STRUXURE™

Heavy-duty Composite Crane Mats

APPLICATIONS

- Crane Work
- Oil & Gas, & Water Well Drilling
- Temporary Access Roads
- Utilities & Pipeline Construction
- Work Platforms
- Ground Protection
- Construction Sites
- Staging Areas
- ROW Mats
- Environmental Containment
- Helicopter & Aviation Landings
- Heavy-Haul Applications



Struxure™ Composite Construction Mats are engineered using a patented Recycled Structural Composite (RSC) formula—making them extremely strong, durable and impervious to rot, fungus, insects, and moisture.

Struxure™ mats are ideal in wet or harsh-temperature environments and are resistant to abrasion and tread-wear. They are an excellent and cost-effective, long-term solution.

Struxure™ mats will not gain weight, warp, or lose strength when wet, yielding consistent, reliable performance. Produced from 100% recycled material, these mats keep plastic waste from landfills. Because they do not leach or contain toxic materials, they are an excellent choice for environmentally sensitive areas.

DIMENSIONS

- **Thickness:**
7" or 9" inches
- **Length:**
Up to 24' feet



Spartan Mat

With over 89 locations, we're closer than you think!

(888) 959-6287 | Sales@SpartanMat.com



**SPARTAN
MAT**

(888) 959-6287
Sales@SpartanMat.com

Struxure™ SR (Steel Reinforced) Heavy Duty Mats
Structural Polymer Composite with A36 Steel Plate
Reinforcement/Matlok™ Hardware Systems

Strong:

Higher compression strength values than OAK

Durable:

Ideal for extremely harsh, wet, outdoor conditions

Reliable:

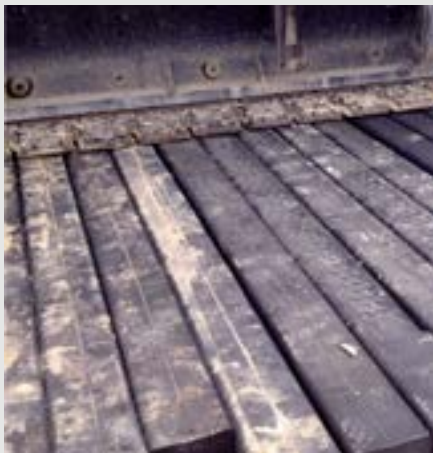
Impervious to rot, fungus, insects and moisture

Safe & Clean:

Safe to use in environmentally sensitive sites. Will not absorb or release chemicals and contains no toxic materials.

Green:

Made from 100% recycled material and 100% recyclable at the end of their long, functional life



Products	Weight (lbs)	Fc Perp Compression Perp. Grain (psi)	Imat (in^4)	MOE Elastic Modulus (psi)	EI (kip*in^2)	Fb Allowable Stress (psi)
11 1/2"x 4' x 20' & 24' Select Structural Red Oak Dry Wood (12%)(1), Limited Availability	20/4,000 24/4,800	550	6,100	1,100,000	6,700,000	1,150
11 1/2"x 4' x 20' & 24' No. 2 Mixed Hardwoods Dry Wood (12%)(1), New & Used in the market today	20/4,000 24/4,800	480	6,100	720,000	4,400,000	765
7"x 46"x 20' Struxure Heavy Duty Mat 5 each SPC, 4 each 1/4" Flitch Plates 8 each Matlok Rod Sets	2,755	4,500(2)	1,315	1,400,000(3)	1,840,000	3,000(4)
7"x 47"x 20' Struxure Heavy Duty Mat 5 each SPC, 4 each 1/2" Flitch Plates 8 each Matlok Rod Sets	3,200	4,500(2)	1,315	1,600,000(3)	2,100,000	3,200(4)
9"x 50.5"x 20' Struxure Heavy Duty Mat 7 each SPC, 4 each 1/4" Flitch Plates 8 each Matlok Rod Sets	4,130	6,000(2)	3,030	1,500,000(3)	4,550,000	3,000(4)
9"x 51"x 24' Struxure Heavy Duty Mat 7 each SPC, 4 each 1/2" Flitch Plates 9 each Matlok Rod Sets	5,300	6,000(2)	3,030	1,700,000(3)	5,150,000	3,200(4)

1. Hardwood Lumber Information Source – American Wood Council NDS Supplement 2015 Edition for 5"x5" and larger timbers. Wet Use Adjustment Factors applied – Fb @ .85, Fc perp @ .67, E @ .90. Mats are not tested before use in the market and structural integrity declines over time.
- 2.
- 3.
4. Number calculated for structural polymer component only as steel plates are isotropic and have no grain. Figures shown assuming standard load distribution between SPC (Perp. Compression = 1,200 psi) and steel plates.
- 5.
6. Calculated from loading/deflection data (tested Nov. 2012) assuming steel plates as primary load carrying members.
- 7.
8. Assuming a factor of safety of 2/3 from yield stress determine via testing Nov. 2017. Stress vales are assumed to be equivalent

Minimum Allowable Soil Bearing Capacity, 7" Thick Steel Reinforced Mat (1/4" x 4) with MatLok Hardware Width Tire or Tread on Mat (in)							
Load (lb)	6"	12"	18"	24"	30"	36"	45"
100,000	3500 psf	3100 psf	2900 psf	2700 psf	2500 psf	2300 psf	2100 psf
140,000	6500 psf	5900 psf	5100 psf	4700 psf	4300 psf	3900 psf	3500 psf
200,000	13,000 psf	10,500 psf	9000 psf	8200 psf	7300 psf	6500 psf	5800 psf
Minimum Allowable Soil Bearing Capacity, 7" Thick Steel Reinforced Mat (1/2" x 4) with MatLok Hardware							
Load (lb)	6"	12"	18"	24"	30"	36"	45"
100,000	3200 psf	2800 psf	2600 psf	2400 psf	2200 psf	2000 psf	1800 psf
140,000	5700 psf	5100 psf	4300 psf	3900 psf	3500 psf	3100 psf	2700 psf
200,000	11,000 psf	9,500 psf	8000 psf	7200 psf	6300 psf	5500 psf	4800 psf
Minimum Allowable Soil Bearing Capacity, 9" Thick Steel Reinforced Mat (1/4" x 6) with MatLok Hardware							
Load (lb)	6"	12"	18"	24"	30"	36"	45"
100,000	2500 psf	2300 psf	2200 psf	2100 psf	2000 psf	1800 psf	1600 psf
140,000	4900 psf	4200 psf	3800 psf	3500 psf	3200 psf	3000 psf	2700 psf
200,000	9000 psf	8100 psf	7000 psf	6200 psf	5700 psf	5300 psf	4500 psf
Minimum Allowable Soil Bearing Capacity, 9" Thick Steel Reinforced Mat (1/2" x 4) with MatLok Hardware							
Load (lb)	6"	12"	18"	24"	30"	36"	45"
100,000	2500 psf	2300 psf	2200 psf	2100 psf	2000 psf	1800 psf	1600 psf
140,000	4900 psf	4200 psf	3800 psf	3500 psf	3200 psf	3000 psf	2700 psf
200,000	9000 psf	8100 psf	7000 psf	6200 psf	5700 psf	5300 psf	4500 psf

Note on Soil Bearing Capacity Tables

- Mat loading tables are derived using a standard design method based on the soil bearing capacity.
- The required crane mat area is calculated by dividing the crane load plus the weight of the mat by the allowable ground bearing pressure.
- Divide this area by the width of the mat to develop the required effective bearing length.
- The mat length is then used to calculate bending (which typically controls the mats design) and shear stresses in the mat, based on the assumption of a uniform pressure equal to the crane load divided by the bearing area acting upward on the bottom of the mat.
- Using a traditional wood mat design as a guide, we utilize published allowable



**SPARTAN
MAT**

(888) 959-6287
Sales@SpartanMat.com

Our Customer Commitment: Spartan Mat believes in taking care of customers. We operate with one fundamental business concept; our clients are the beginning and the end of our reason to be in business. Proactively, we find solutions that best achieve our clients' goals. We believe lasting relationships are the lifeblood of our business.

Matting Provides Protection For:

- ◆ The Environment
- ◆ Equipment
- ◆ Your Workforce
- ◆ Infrastructure
- ◆ Containment Layers

Matting Creates:

- ◆ Usable Work Surfaces
- ◆ Increased Efficiencies
- ◆ Less Down Time
- ◆ Stability for Lifts
- ◆ Temporary Roads
- ◆ Temporary Bridges

Matting Helps Prevent:

- ◆ Work Delays
- ◆ Damage to Equipment
- ◆ Injury to Personnel
- ◆ Remediation Needs

Ask Us About:

- ◆ Rental Programs
- ◆ Purchase & Buyback Programs
- ◆ Mat Laydown & Pickup Services (Including Graveyard Services)
- ◆ Used Mat Sorting, Grading & Recycling



Struxure™ SR (steel reinforced) heavy-duty mats, made from structural polymer composites (SPC), when combined with A36 reinforced steel 1/4" or 1/2" steel flitch plates and MatLok™ hardware systems are more rigid, allowing them to be able to support more load than traditional 12" hardwood lumber mats for use under heavy equipment in wet or challenging project site conditions.



Spartan Mat

With over 89 locations, we're closer than you think!
(888) 959-6287 | Sales@SpartanMat.com